

Supporting Your Child in Year 5



Our Values



Collaboration – We help and support each other, through partnership, teamwork and friendship.

Aspiration – We try to be the best we can, aiming for excellence, innovation and creativity.

Respect – We care for everyone and our environment, with relationships built on trust and kindness.

Endeavour – We focus on our learning, displaying resilience and perseverance.

Our Values



Our Filton Avenue Mantra

We collaborate in work and play,

We aspire to do our best each day.

We show **respect** and kindness too,

We all **endeavour** in what we do.

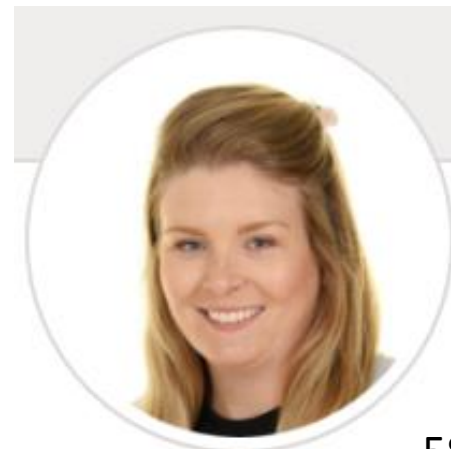
The Year 5 Teachers and Cover Team



Mr Wisby- 5W



Miss Keech -5K



Mrs Sandy
(M, T, W)

5SM



Mrs Morris
(W, Th, F)



Mrs Houghton
Cover team



Mr Edwards
Cover team



Mrs Lackie
Phase 3 leader

Attendance



DON'T FORGET
SCHOOL STARTS AT

8:45AM

FILTON AVENUE
PRIMARY SCHOOL

**EVERY CHILD ATTENDING,
EVERY CHILD ACHIEVING**



The gates open at 8:35am and close at 8:50am everyday.

If you are struggling to get your child to school on time, please contact attendancefilton@filtonavenue.com

The School Day



| | Monday | Tuesday | Wednesday PPA Day- Alice | Thursday | Friday |
|---------------|--------------------|------------------|--|------------------|--|
| 8:40 – 8.55 | Feedback | | | | |
| 8.45 – 9.00 | Register | | | | |
| 9.00 – 9.20 | Spelling | Spelling | Spelling | Spelling | Spelling |
| 9.25 – 9.50 | Reading | Reading | Reading | Reading | 9:25 – 10:20 5SM Music |
| 9.50 – 10:45 | Writer | Writer | Philosopher (AM/AS) – 5SM Theologian (Tina) – 5K Linguist (Richard) – 5W Philosopher (AM/AS) – 5W Theologian (Tina) – 5SM Linguist (Richard) – 5K | Writer | 10:15 – 11:20 (Incl. break) 5W 11:20 – 12:15 5K |
| 10.45 – 11.00 | Break | | | | |
| 11.00 – 12.00 | Maths | Maths | Core Skills Maths | Maths | Maths |
| 12.00 – 12.15 | ERIC | Maths Meeting | | Maths Meeting | |
| 12.15 – 1:15 | Lunch | | | | |
| 1.15 – 1.45 | Behaviour Assembly | ERIC & Storytime | 1:15-2:15 5W P.E. 5K & 5SM Enquiry (Intro to space) | ERIC | Celebration Assembly |
| 1.45 – 2.45 | Enquiry | Author-Writer | 2:20 – 2:50 Philosopher (AM/AS) – 5K Theologian (Tina) – 5W Linguist (Richard) – 5SM | Enquiry | 5W – Enquiry / Writer 1:15 – 2:15 5K 2:15 – 3:15 5SM |
| 2.45 – 3.00 | ERIC | | | | ERIC |
| 3:00 - 3:20 | Storytime | Values Assembly | | Singing Assembly | Storytime |
| 3.20 – 3.25 | Golden ticket | | | | |

The School Day – Family Dining



The School Day



FILTON AVENUE
PRIMARY SCHOOL

Nut Allergies:

Some of children at school have severe nut allergies. Please help us support everyone by ensuring that you do not bring peanut and tree nut products to school.

This includes hazelnut spreads such as nutella, peanut butter and chocolate bars with nuts.

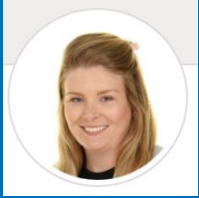


We appreciate your support with this.



FILTON AVENUE
PRIMARY SCHOOL

Uniform and PE



YEAR 5 & 6 UNIFORMS

Year 5 and Year 6 pupils have a slightly different uniform. In addition to the black/grey trousers and skirts/dresses and black shoes, they wear navy v-necked jumpers with a school tie (available to purchase from Monkhouse Schoolwear), and a white shirt.

Below are some examples:

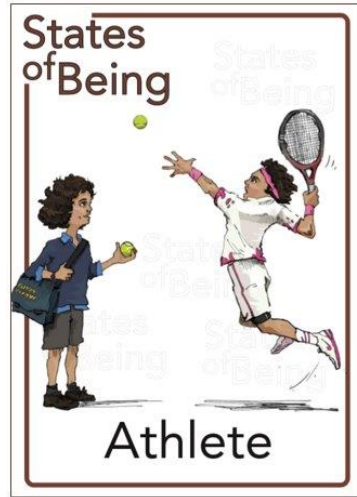


P.E. KIT

For PE, children should wear a plain t-shirt, joggers, leggings or shorts, and trainers. They can also wear a sweatshirt. No hoodies or football kits, please.

Below are some examples:



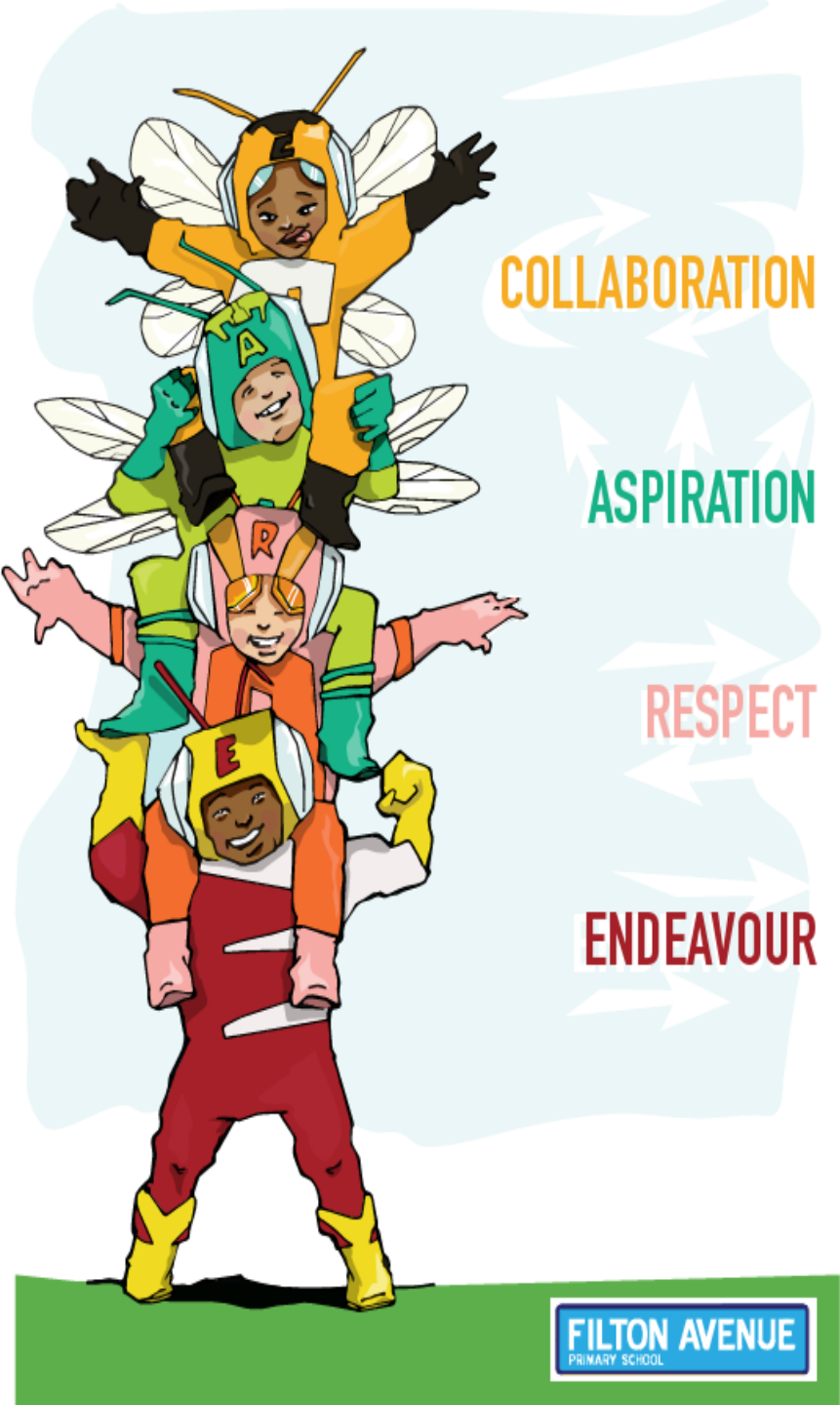


Bristol Sport will be leading
 orienteering in Term 1
 5W Wednesday
 5SM and 5K Friday



We will go swimming in Term3

Behaviour



Class Dojo





Bullying of any kind is never acceptable behaviour at our school.

If bullying does occur, all students should tell a member of staff so that incidents can be dealt with promptly and effectively.

Our definition of bullying:

Bullying is the repetitive, intentional hurting of one person or group by another person or group, where the relationship involves an imbalance of power. Bullying can be physical, verbal or psychological. It can happen face-to-face or online.



How we keep you safe:



If you are concerned about the welfare of any child or adult then please discuss this with a member of the Safeguarding Team.

We have a Safeguarding Team that is always happy to help in whatever way they can!



Dan Rodeck
Designated
Safeguarding Lead



Sam Crane
Deputy Designated
Safeguarding Lead



Mel McCorry
Deputy Designated
Safeguarding Lead



Gemma Kirk
Deputy Designated
Safeguarding Lead



Lisa Lackie
Deputy Designated
Safeguarding Lead



Kat Preece
Deputy Designated
Safeguarding Lead




Ros Walker
Attendance Lead &
Designated Teacher



Home Learning



| | Activity | Extra Information |
|---------------|--|--|
| Author Writer | RWI Red/Orange words | 6 words shared on Dojo each week to practice spelling |
| | Reading Eggs Spelling Assignment  | One assignment will be set each week for your child to complete online. Please encourage them to use the personalised learning on Reading Eggs as much as possible at home too. |
| | Colour banded/Accelerated Reader text | Daily reading (Independent) |
| Mathematician | Times Table Rock Stars  | 5-10 mins per day |
| | Mathletics Assignment  | One assignment will be set each week for your child to complete online. Please encourage them to use the personalised learning on Mathletics much as possible at home too. |

Ask the class teacher for a reminder of log ins

Questions?