

FILTON AVENUE

PRIMARY SCHOOL

Welcome

Supporting your child in
Reception

Meet the
team

Class
teachers



Mrs French
Red Class Teacher
EYFS lead



Mrs Van Doorslaer
Green Class Teacher



Mrs Ranes
Yellow Class Teacher

Meet the
team

Learning
support
specialists



Mrs Kolotaj



Miss Rowsell



Mrs Hylton



Mrs Clarke



Mrs Khanom



Mrs Kaur

Meet the
team

Cover team



Mrs Thomas

Wednesdays and Fridays
Yellow Class



Miss Francis

Mondays and Wednesdays
Red Class

Friday
Yellow Class



Ms Mousavi

Wednesdays
Green Class

Meet the
team

Phase
leads



Mrs Walker
Phase 1 lead
Assistant Head
Designated Safeguarding Lead



Mrs McCory
Phase 1 lead
Assistant Head
Designated Safeguarding Lead

The school day

Timings

- The school day starts at 8.40am.
- Children will be marked as late if they arrive after the 8:50am. register.
- At the end of the day, Reception children leave at 3:15pm.
- Ensure you have let your class teacher know who is allowed to pick up regularly. If someone different will be collecting, please inform your class teachers or call the office.

Attendance

FILTON AVENUE
PRIMARY SCHOOL

Every child attending,
every child achieving



Miss school,
miss out!

Attendance
This term Green are working towards
95% to get
biscuits + squash
on the last day of term.

Every child attending,
Every child achieving!

FILTON AVENUE
PRIMARY SCHOOL

ASPIRATION



A typical week

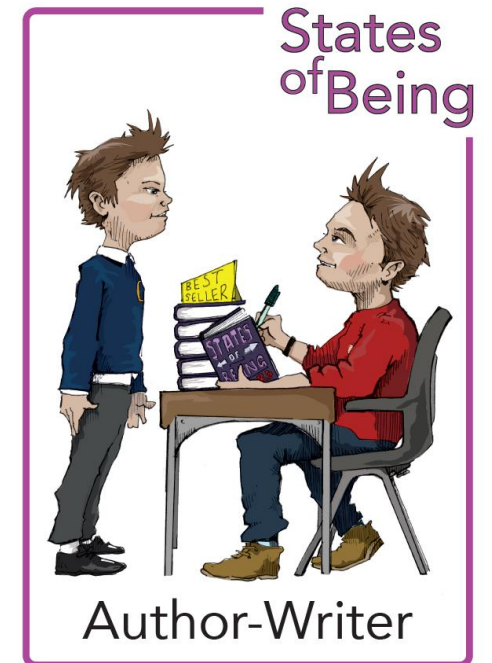
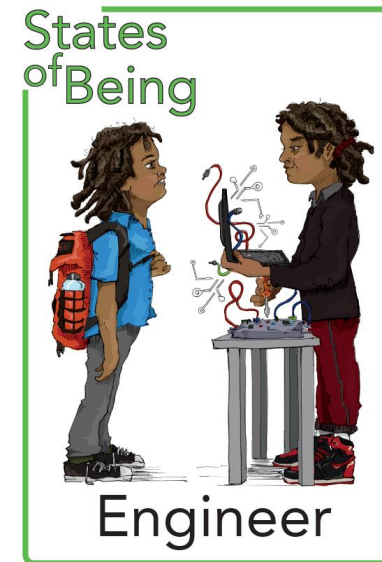
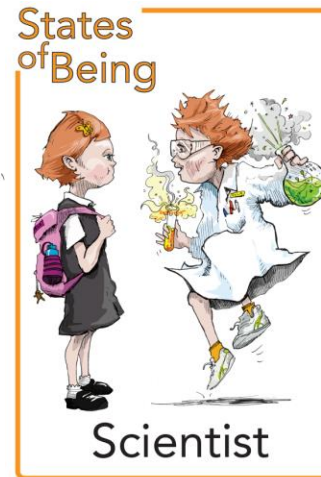
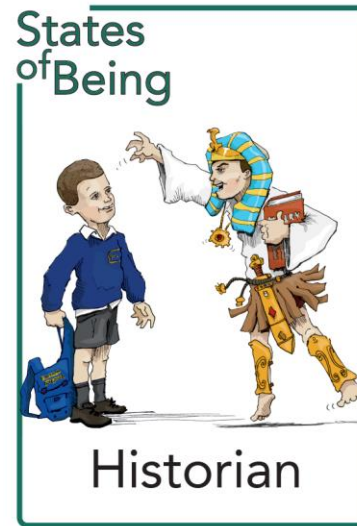
EYFS Timetable

| | Monday | Tuesday | Wednesday | Thursday | Friday |
|---------------|---|---|---|---|---|
| 8:40 – 9.00 | Entrance Activity – letter formation register | Entrance Activity – letter formation register | Entrance Activity – letter formation register | Entrance Activity – letter formation register | Entrance Activity – letter formation register |
| 9.10 - 10.05 | Maths | | | Author Writer | Maths |
| 10.05 – 10.20 | Author writer | | | | |
| 10.20 – 10.40 | Playtime | | | | |
| 10.40 – 11.00 | Milk and Fruit Story time | Milk & Fruit Story time | Milk & Fruit Story time | Milk & Fruit Story time | Milk & Fruit Story time |
| 11.00 – 11:45 | RWI Phonics | | | | |
| 11:40 – 1:00 | Hand washing, Lunch | | | | |
| 1.00 – 1.15 | Number sense | Number Sense | | Number Sense | Kapow |
| 1:15 – 1:30 | Enquiry Input | | | | |
| 1:30 – 2.50 | Enquiry <i>*RWInc YR Target Readers</i> | PE | Enquiry <i>*RWInc YR Target Readers</i> | PE/ | Enquiry <i>*RWInc YR Target Readers</i> |
| | | Enquiry <i>*RWInc YR Target Readers</i> | | Enquiry <i>*RWInc YR Target Readers</i> | |
| 2.50 – 3.10 | Storytime | | | | |
| 3.10 - 3.15 | Golden Ticket/Home Time | | | | |

Enquiry Overview

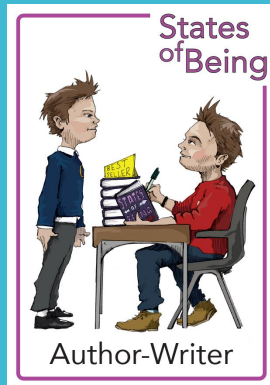
- Term 1 & Term 2 – What makes me unique?
- Term 3 – How do we stay healthy?
- Term 4 – Where do we call home?
- Term 5 – How do we travel?
- Term 6 – How do things grow?

States of being



Class Texts

- Term 1 – Nursery Rhymes
- Term 2 – Mixed, The Kindest Red, Room on the Broom



P.E

Yellow Class – Monday

Red Class – Tuesday

Green Class – Thursday

Children can come into school wearing a PE kit on their PE day.

- Leggings
- Joggers
- T-shirt
- Trainers/daps



Big Brush Club



We will be brushing our teeth every day after lunch.

Please return your consent forms to your class teacher.



Home learning

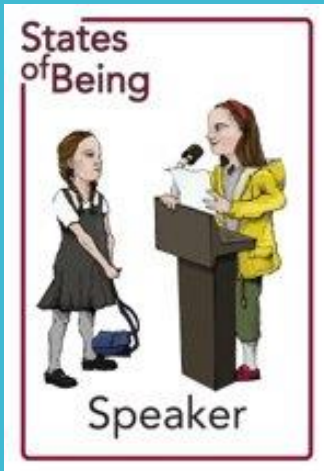
- Look out for RWI Phonics videos on your class dojo pages. These will show you the sound we are learning each day.
- Children will bring home a letter formation sheet to practice writing the sound. Bring them back to school when they are completed to receive Dojo point.
- Children can choose a story book from the home reader box. This is a class library system where you can borrow a book to share together and bring it back to school when you are done.
- They will later bring home a book that matches their phonics knowledge which they can read at home to you. Please listen to your child read at least 3 times a week.

At Filton Avenue we aim to equip our learners with the skills to talk and listen effectively to one another. **Effective communication helps every child to fulfil their potential and flourish in their school life and beyond.** We endeavour to give every learner this opportunity.

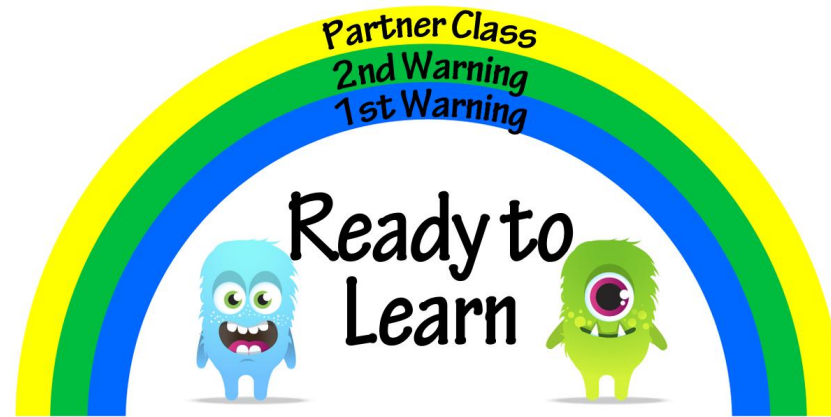
Oracy underpins the development of reading, writing, and maths and is key to progress in all subjects.

We aim to encourage speakers, who are confident to communicate, debate and present in a wide range of situations to a wide range of different audiences.

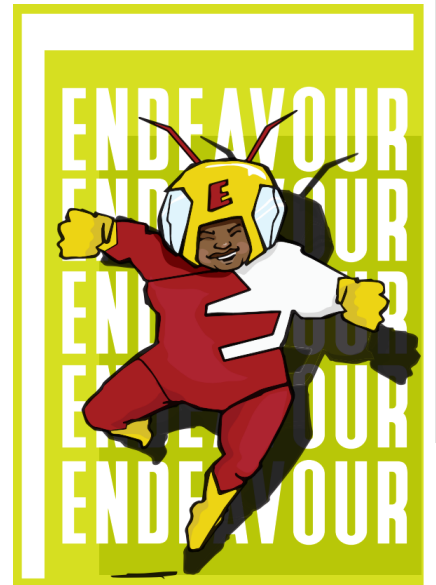
Oracy



Behaviour



Dojos
Class rewards
Warnings
Partner class
Phase lead



Behaviour

FILTON AVENUE
PRIMARY SCHOOL

This golden ticket is awarded to

for displaying the school value

Teacher Signature: _____ Date: _____

"Get talking in class" Date: _____

The Speaker of the Week is awarded to _____
for _____

Golden tickets – A golden ticket is given out daily.

A child in the class is chosen to receive a Golden Ticket for showing outstanding school values that day. This will be written on the certificate.

Golden ticket tea occurs at the end of each term with the Head Teacher. In Reception, we ensure that all children get to attend across the year, regardless of how many Golden Tickets they have received.

Speaker of the week – This is awarded once a week. On a Friday, the teacher will choose someone from the class who has demonstrated good oracy skills that week.

Anti-bullying

FILTON AVENUE
PRIMARY SCHOOL

Together we will stop bullying

Bullying is not when two people have a disagreement or fall out over something, it is usually

Several
Times
On
Purpose



Start
Telling
Other
People

Our school value 'Respect' means we respect everyone, and that bullying is never acceptable. Let's work together to stop it.



FILTON AVENUE
PRIMARY SCHOOL

Together we will stop bullying

What is bullying?

Bullying is the **repetitive, intentional** hurting of one person (or group) by another person (or group), where there is an imbalance of power.

Bullying can be **physical, verbal** or **psychological** and can happen **face-to-face** or **online**. Bullying is often 'group behaviour'. There may be a ringleader, assistants and bystanders. Bullying is not 'falling out' with friends or not getting on with someone.

We celebrate diversity at Filton Avenue, and it is never ok to make an upsetting comment about part of someone's identity e.g. their religion, their appearance, their gender or any disability, even if this is a one-off.

Reporting Bullying

Children need to report all bullying to a trusted adult in school or use a worry box.

The adults in school will investigate what has happened and speak to the child being bullied, before working out how to support all the children involved. The adults will let parents and carers know so that they can help too.

Our school value 'Respect' means we respect everyone, and that bullying is never acceptable. Let's work together to stop it.

BULLYING IS A GROUP BEHAVIOUR



- OUTSIDER**
The Outsider ignores or doesn't see the bullying and doesn't want to get involved.
- TARGET**
The Target is the person at whom the bullying is aimed at.
- RINGLEADER**
The Ringleader initiates and leads the bullying.
- REINFORCER**
The Reinforcer supports the bullying, might laugh or encourage what's going on but doesn't 'do' it.
- DEFENDER**
The Defender stands up for someone being bullied. Knows that bullying is wrong and feels confident enough to defend. They might talk to an adult in school.
- ASSISTANT**
The Assistant is actively involved in 'doing' the bullying. But does not lead it.

ANTI-BULLYING ALLIANCE

Safeguarding

- As well as safeguarding, school can provide lots of different support including:
 - Support for Young Carers
 - School health nurse
 - Parenting courses
 - Foodbank vouchers
 - Domestic violence support
 - Bereavement support
 - Online safety advice

FILTON AVENUE
PRIMARY SCHOOL

How we keep you safe:

If you are concerned about the welfare of any child or adult then please discuss this with a member of the Safeguarding Team.

We have a Safeguarding Team that is always happy to help in whatever way they can!

| | | | | | |
|---|--|---|--|---|---|
|  Dan Rodeck Designated Safeguarding Lead |  Sam Crane Deputy Designated Safeguarding Lead | | | | |
|  Mel McCorry Deputy Designated Safeguarding Lead |  Gemma Kirk Deputy Designated Safeguarding Lead |  Lisa Lackie Deputy Designated Safeguarding Lead |  Kat Preece Deputy Designated Safeguarding Lead |  Philippa Read Deputy Designated Safeguarding Lead |  Ros Walker Attendance Lead & Designated Teacher |

Inclusive Goal

Our Inclusive goal:

We want every person in our school community to feel free to be themselves, to feel seen, to feel safe, to feel supported, and to feel like they belong.

We will take a victim-centred approach and challenge any prejudice-based language or discriminatory behaviour.

Online Safety Class Charter



I agree
that I
will:

Ask an adult if we want to use the computers/tablets

Only visit website which are useful to my learning, or that an adult has told us we can access

I will ask for help from a teacher or suitable adult if I am not sure what to do or if I think I have done something wrong

Tell a teacher or an adult I trust if anything from the internet makes us feel scared or upset, or is inappropriate

Make sure any messages we send are polite and respectful. Report any unkind messages on social media (whether in or out of school)

Hand mobile phones into the teacher and only give our telephone numbers to people we know and trust

Always keep our personal details private when on the internet

Check with an adult before putting photographs of myself or others on the internet

Respect and look after school computing equipment and report any faults to my class teacher

If we break the rules, we might not be allowed to use a computer/tablet