

What I already know

Year 3 How do plants die? Knowledge organiser

What I will learn in this enquiry



Seeds, bulbs and fruit

- seeds are what a new plant grows from
- fruit gives animals food, which means they eat the seeds to take them away from the plant.



leaves

stem

roots

flower

- has petals

flower

- attracts pollinators
- creates nectar

leaves

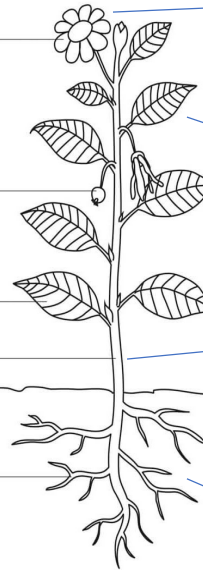
- turn sunlight into energy

stem

- gives structure
- transports water and nutrients to the leaves

roots

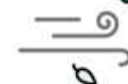
- draw up water and nutrients from the soil



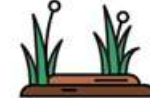
What do plants need to survive?



Light



Gases from the air



Room to grow



Nutrients from the soil



Water

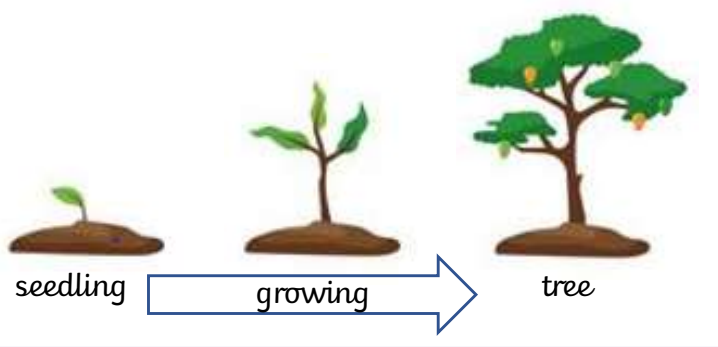


The right temperature

seedling

growing

tree



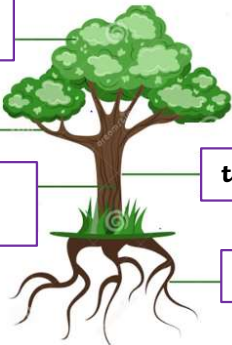
many leaves
one leaf

branch

bark on the
outside

trunk

roots

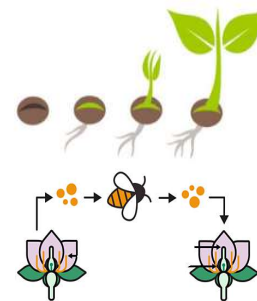


evergreen

Keep their leaves all year round.

deciduous

Lose their leaves in winter and regrow them in spring.



Germination

A plant starts to grow from a seed.

Pollination

A pollinator takes **pollen** from one flower to another which will then make a seed. The pollinator visits flowers to feed on **nectar**.



Seed dispersal

Seeds move away from the parent plant by:
the wind,
being eaten,
being carried (example: stuck on animal fur)