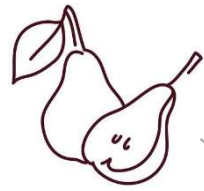


What I already know

Year 2 How do plants grow near me? Knowledge organiser

What I will learn in this enquiry



flower and petals



seeds and fruit



One leaf
many leaves

branch

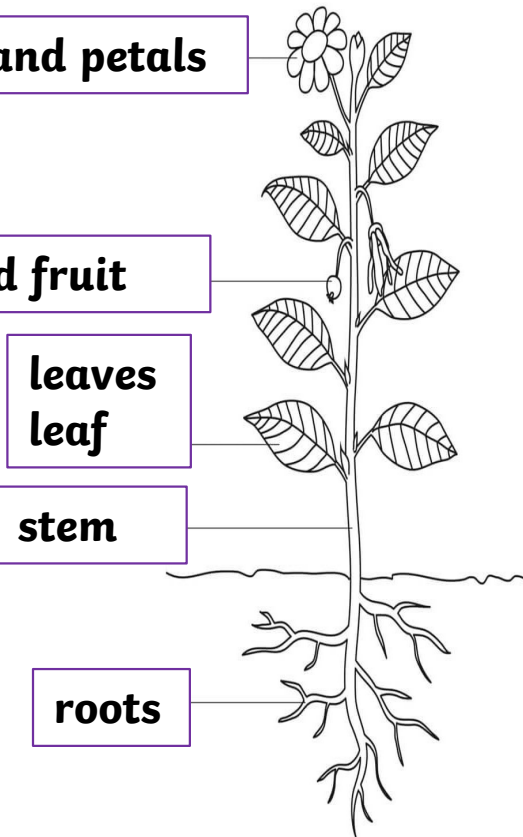
bark on the
outside

trunk

roots



roots
grow underground



roots



evergreen

Keep their
leaves all
year
round.

deciduous

Lose their
leaves in winter
and regrow
them in spring.

What do plants need to survive?



Light



Water



Warmth



Seedling

growing

tree



a plant starts to grow from a
seed