

FILTON AVENUE

PRIMARY SCHOOL

Welcome!

Welcome to Year Four

4DL: Mrs. Davy & Mrs. Leyland

4W: Miss Wheeler

4M: Mr. Moore

Our Classrooms...



Arriving in school

The school day **starts** at 8.45. Thank you for having your child ready to enter the classroom at this time.

The register will be taken at 8.55 and any children arriving after this time will be marked in as late.

The school day

Timetable

	Monday	Tuesday (Training)	Wednesday (PPA)	Thursday	Friday
8.45-9:00	Morning task				
9:00-9:30	Guided reading	Guided reading	Guided reading	Guided reading	Guided reading
9:30 – 10.30	English	English	English	English	English
10:30 – 10:45	BREAK				
10:45 - 11.00	Handwriting	<u>xtable</u> practice	Handwriting	<u>xtable</u> practice	<u>xtable</u> test
11.00 - 12.00	Maths	Maths	Maths	Maths	Maths
12:00-1:00	LUNCH				
1:00-1:10	Mindfulness				
1:10-1:40	Spellings	Swimming	Unique Voice	Spellings	Spelling + test
1.40 – 2.40	Enquiry			Enquiry	PSHE
					Golden Time
2.45 – 3.00	Assembly	Story		Assembly	Assembly

Lunch

- ✓ sandwich, wrap, pasta, crackers
- ✓ carrot, cucumber, tomatoes
- ✓ fresh or dried fruit
- ✓ yogurt
- ✓ biscuit, flapjack, malt loaf

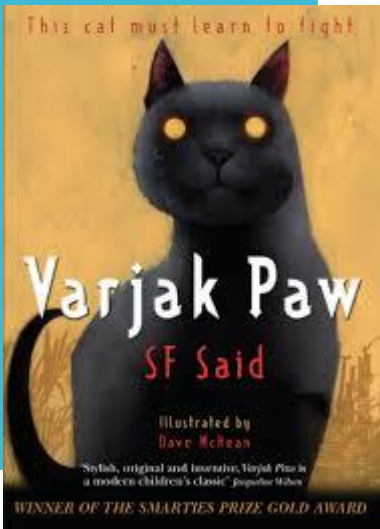


Please limit the
treats!
X peanut products

Maths

- Our Maths scheme focuses on broadening and deepening the children's understanding of particular units of work.
- We are looking at core arithmetic skills and number skills such as place value, fractions, mental and written methods for the four calculations.
- There is an expectation that all children will know their times tables up to 12×12 by the end of the school year, so frequent practice recalling times tables from memory would be very helpful.
- Times Table Rock Stars activities can be accessed at home to reinforce learning in the classroom.

Literacy



- **Spellings**

Children will be having three, half hour spelling lessons every week. This is happening across the whole school in order to meet the national requirements for spelling. We have sent home an overview of the spellings for the term and will have weekly tests in class on Fridays.

- We will teach grammar and punctuation within literacy lessons so that the skills are learnt in context and applied in their writing.
- This term our text is 'Varjak Paw' by S.F.Said. We are writing narratives using description, and diary entries. Our Non-Fiction writing focuses on 'Animal' reports.

Reading

- The children have a new reading log book to track the books they read and how often they are reading at home.
- This year, we have introduced a new system of reading called Accelerated Reader. Once children have finished a book, they will have the opportunity to carry out a short comprehension quiz to check their understanding of the book before moving onto the next.
- Children must be read with an adult at home at least 3 times a week
- Guided Reading happens every day.

Reading Hats support the children to talk about books and develop comprehension skills...

Reading Hats



Feelings/emotions



Evidence



**Thinking about
thinking**



Understanding

PE



- Every child **needs** a PE kit in a named bag containing labelled daps or trainers and a PE kit appropriate for the season. Please bring one in if they haven't already got one in school.
- PE takes place **every Tuesday** afternoon and this term we are swimming.

Swimming



Swimming takes place on Tuesday afternoons. Please make sure your child has a swimming costume or swim shorts and a towel (shorts must be above the knee).

Jewellery must be removed (small stud earrings are ok).

Long hair **MUST** be tied back.

Enquiry

- This year, we have a new approach to the wider curriculum.
- The children will be given a question or stimulus at the beginning of each term. This will form the lessons for the term. We will then come back to the question at the end of the term to see how their knowledge has developed.
- This approach gives the children the opportunity to become a scientist, historian, geographer, philosopher etc.
- This term our question is “How are animals different?”



Making responsible
choices...

The Behaviour Rainbow
(whole school policy)



Class Dojo

Each child is represented by an avatar and they are given points for different behaviour attitudes and school values.

- Parents have been invited to join class dojo. You will know when your child gets dojo points and for what value.



Attendance Matters

FILTON AVENUE
PRIMARY SCHOOL

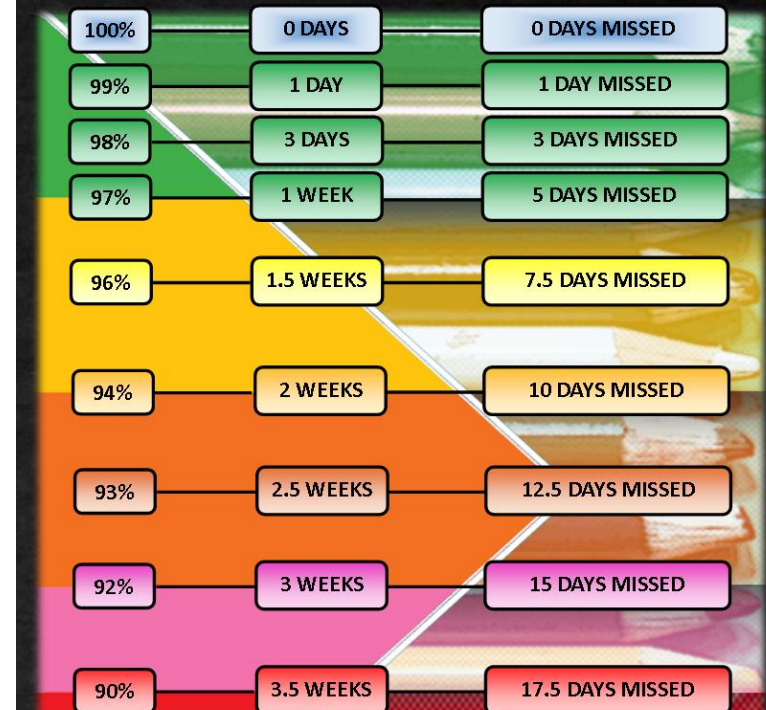
Attendance Diamond

FILTON AVENUE
PRIMARY SCHOOL



Attendance Matters

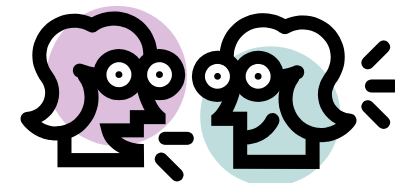
FILTON AVENUE
PRIMARY SCHOOL



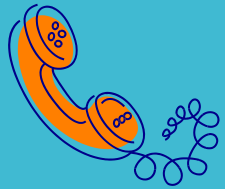
MAXIMISE YOUR POTENTIAL.
ATTEND SCHOOL EVERY DAY.

Ways to encourage good attendance

1. Find out regularly your child's absence. (Ask for half days if easier) and check this matches with your own record.
2. Talk regularly with your child about school and how they feel about it. Children are more likely to attend if they feel supported and anxieties listened to.



Ways to encourage good attendance

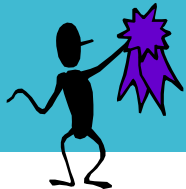


3. Phone us as soon as possible to tell us why your child is absent, and when you expect them to return. Putting the school number in your phone can save you time (**0117 903 0302**). Know the school routine for alerting you to absence.
4. Please discuss illness with your child so they only have days off when they are genuinely ill
5. Avoid taking holidays in school time as these will be unauthorised.



Ways to encourage good attendance

6. Know routines of the school day to avoid issues, e.g. have they got their PE kit? (Tuesday)
7. If you have any concerns please ring us (or contact via classdojo) – we will check attendance and be discreet.
8. Please reward and praise attendance even small successes, e.g. going in promptly, even when first lesson is their worst!



Rewards



FILTON AVENUE
PRIMARY SCHOOL

Rewards every week
for the highest
attending classes
and trophies given
out

Termly book draw
for green band
attendance



Attend and Achieve!

- If a school can improve attendance by 1%, they will see a 5-6% improvement in attainment. (Department for Education and Skills)
- Please help us and your child by ensuring their attendance remains above 95%, allowing them to achieve their potential.
- Please come and speak to us if you have any concerns.



FILTON AVENUE
PRIMARY SCHOOL

Thank you
Questions?