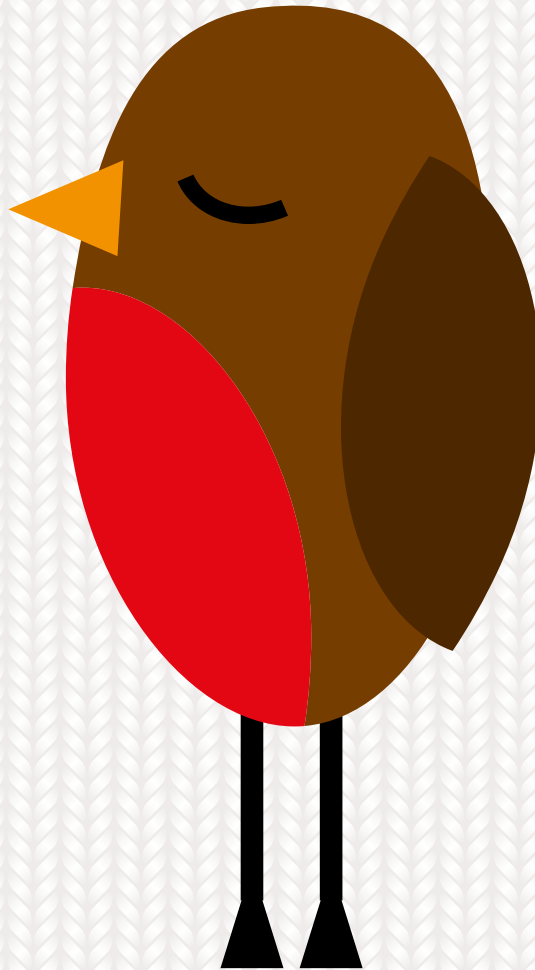


TEXT SANTA®

ROCKING ROBIN Instructions

1. Turn over for Rocking Robin pattern.
2. Scale up the design to the desired size.
3. Cut the shapes out of felt.
4. Stick or sew onto jumper.



**WE ARE
MACMILLAN.
CANCER SUPPORT**

MAKE-A-WISH®
United Kingdom

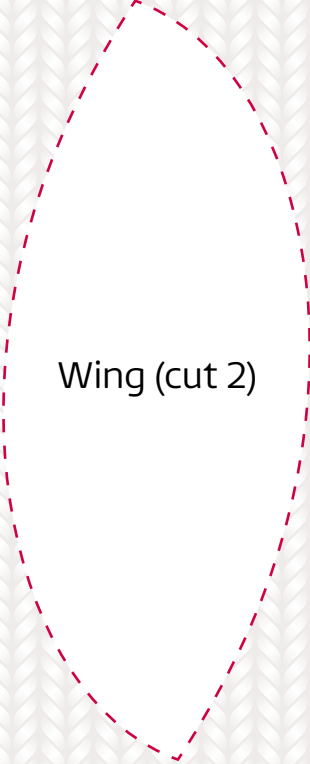
 **Save the Children**


give with confidence

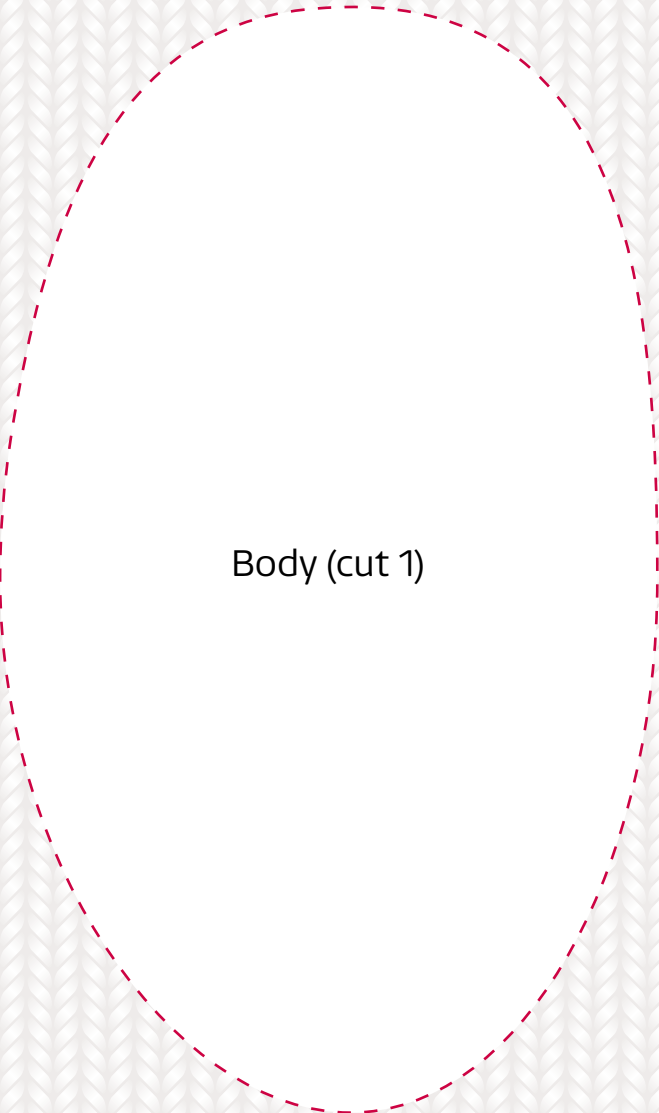
100% of your donations will be shared equally amongst Macmillan Cancer Support, Make-A-Wish® UK and Save the Children, going directly to support vital work both in the UK and abroad. Text Santa © © ITV Text Santa Ltd, 2015. All rights reserved. © Macmillan Cancer Support, registered charity 261017/SC039907/604 | © Save the Children, registered charity 213890/SC039570 | © Make-A-Wish UK, registered charity 295672/SC037479

TEXT SANTA®

ROCKING ROBIN Pattern




Wing (cut 2)




Body (cut 1)



Beak (cut 1)



Leg (cut 2)



Eye (cut 2)

TEXT SANTA®

ROCKING ROBIN Instructions

1. Turn over for Festive Penguin pattern.
2. Scale up the design to the desired size.
3. Cut the shapes out of felt.
4. Stick or sew onto jumper.



**WE ARE
MACMILLAN.
CANCER SUPPORT**

MAKE-A-WISH®
United Kingdom

 **Save the Children**


give with confidence

100% of your donations will be shared equally amongst Macmillan Cancer Support, Make-A-Wish® UK and Save the Children, going directly to support vital work both in the UK and abroad. Text Santa © © ITV Text Santa Ltd, 2015. All rights reserved. © Macmillan Cancer Support, registered charity 261017/SC039907/604 | © Save the Children, registered charity 213890/SC039570 | © Make-A-Wish UK, registered charity 295672/SC037479

TEXT SANTA®

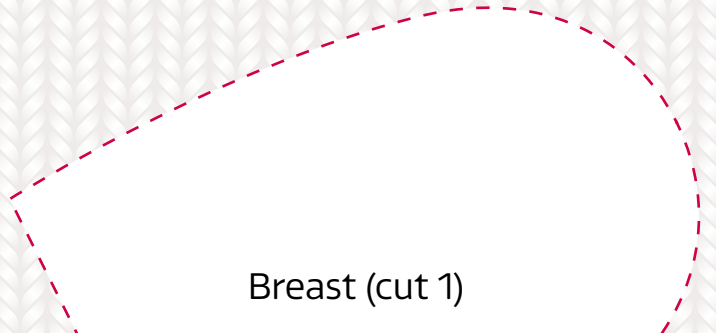
FESTIVE PENGUIN Pattern



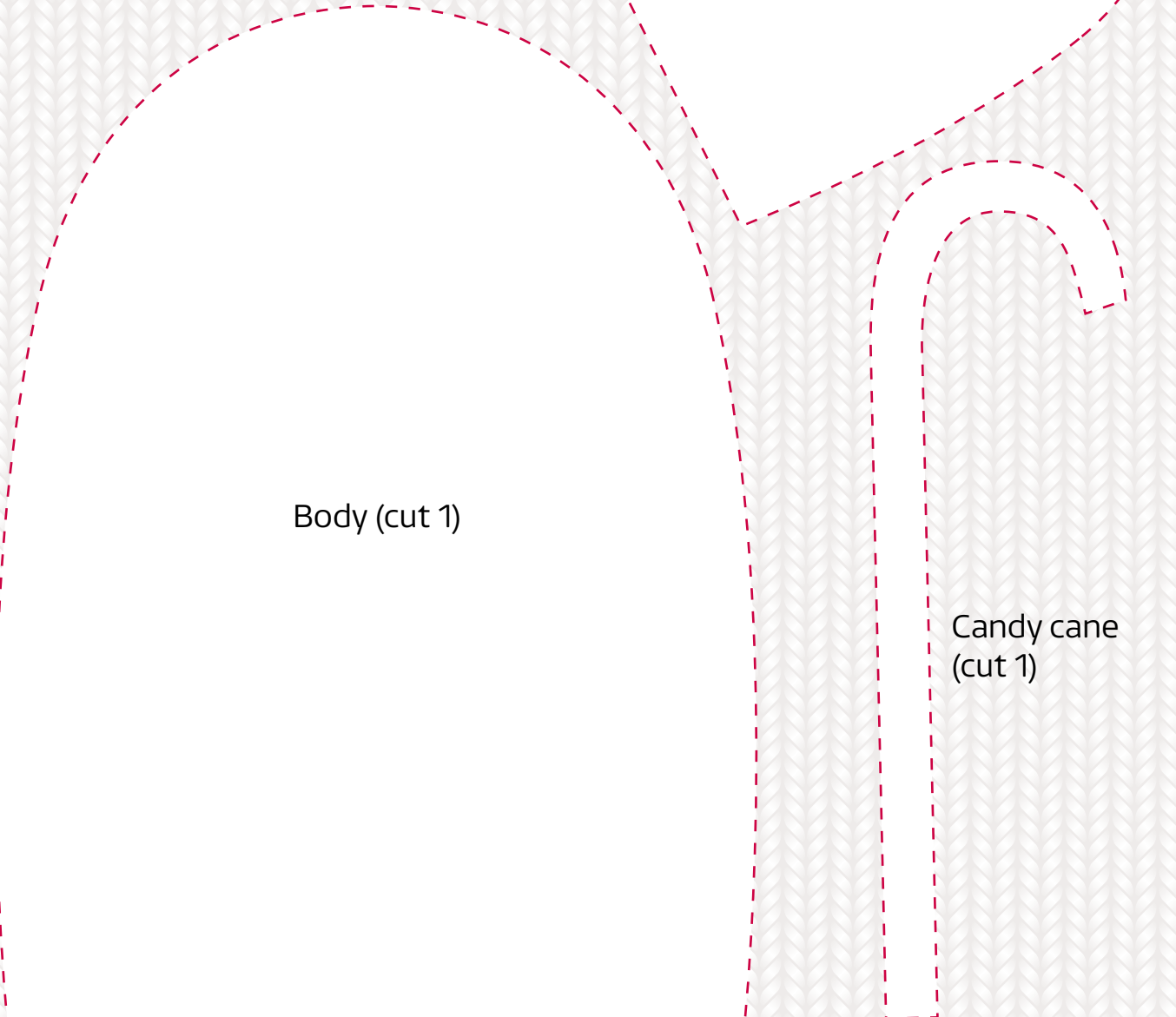
Eye (cut 2)



Beak (cut 1)



Breast (cut 1)



Body (cut 1)



Candy cane
(cut 1)

TEXT SANTA®

SUPER SNOWMAN Instructions

1. Turn over for Super Snowman pattern.
2. Scale up the design to the desired size.
3. Cut the shapes out of felt.
4. Stick or sew onto jumper.



**WE ARE
MACMILLAN.
CANCER SUPPORT**

MAKE-A-WISH®
United Kingdom



Save the Children

FRSB
give with confidence

100% of your donations will be shared equally amongst Macmillan Cancer Support, Make-A-Wish® UK and Save the Children, going directly to support vital work both in the UK and abroad. Text Santa © © ITV Text Santa Ltd, 2015. All rights reserved. © Macmillan Cancer Support, registered charity 261017/SC039907/604 | © Save the Children, registered charity 213890/SC039570 | © Make-A-Wish UK, registered charity 295672/SC037479

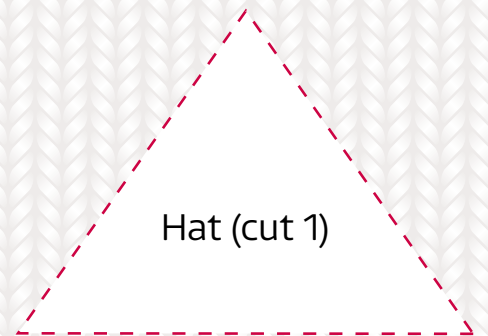
TEXT SANTA®

SUPER SNOWMAN Pattern

Carrot nose (cut 1)



Eyes
(cut 2)



Hat (cut 1)



Hat bobble
(cut 1)

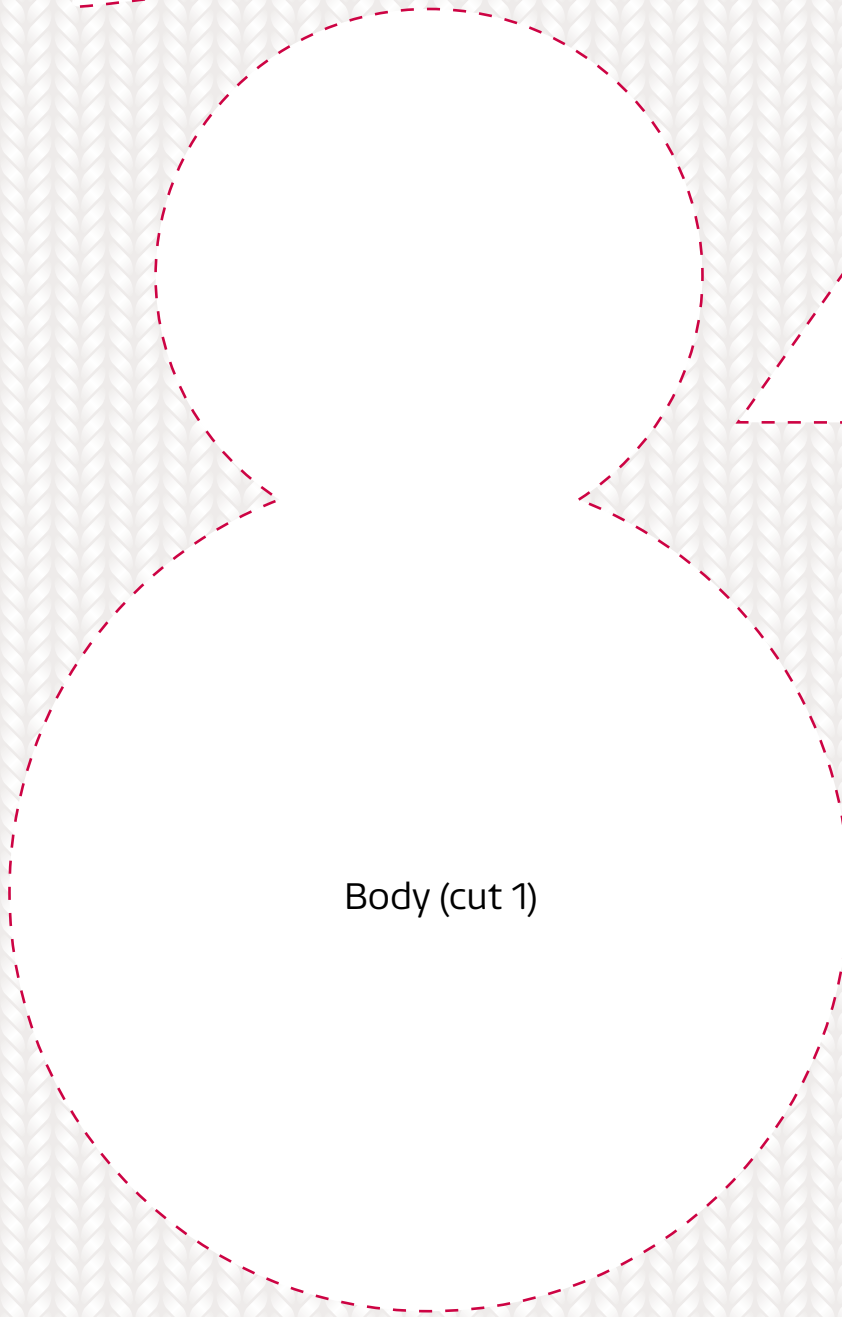


Arm (cut 2)

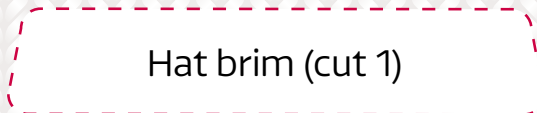
Scarf (cut 1)



Body (cut 1)



Hat brim (cut 1)



TEXT SANTA®

STICKY PUDDING Instructions

1. Turn over for Sticky Pudding pattern.
2. Scale up the design to the desired size.
3. Cut the shapes out of felt.
4. Stick or sew onto jumper.



**WE ARE
MACMILLAN.
CANCER SUPPORT**

MAKE-A-WISH®
United Kingdom

 **Save the Children**


give with confidence

100% of your donations will be shared equally amongst Macmillan Cancer Support, Make-A-Wish® UK and Save the Children, going directly to support vital work both in the UK and abroad. Text Santa © © ITV Text Santa Ltd, 2015. All rights reserved. © Macmillan Cancer Support, registered charity 261017/SC039907/604 | © Save the Children, registered charity 213890/SC039570 | © Make-A-Wish UK, registered charity 295672/SC037479

TEXT SANTA®

STICKY PUDDING Pattern

Icing (cut 1)

Berries (cut 1)

Holly (cut 2)

Pudding (cut 1)